


PE **Strategies**

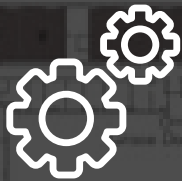
Healthcare



A group of people, including men and women, are gathered around a wall covered in numerous photographs and documents. They appear to be in a collaborative meeting or workshop, with one woman pointing at a specific image on the wall. The scene is dimly lit, with a strong blue color cast over the entire image.

MANY OF THE MOST SALIENT ISSUES FACING THE BUILT ENVIRONMENT DEMAND A COMPREHENSIVE APPROACH, AN INTEGRATED SUITE OF SKILLS, AND SOPHISTICATED ANALYSIS. PE Strategies builds on the 40-year multidisciplinary expertise and global platform of Perkins Eastman, and a thirty year history of serving as trusted advisors to institutions, cities, and public agencies and landowners.

STRATEGIC PLANNING



System-wide Strategies for
Healthcare Systems



Trusted Advisors to Medical
Centers planning for Growth and
Modernization



Development Advisory
Services

Our clients understand that adaptation and growth are keys to survival. PE Strategies builds on a track record of creating strategic plans that have helped them establish a vision, and align their assets and resources with their future needs.

STRATEGIC PLANNING

SYSTEM-WIDE STRATEGIES FOR HEALTHCARE SYSTEMS

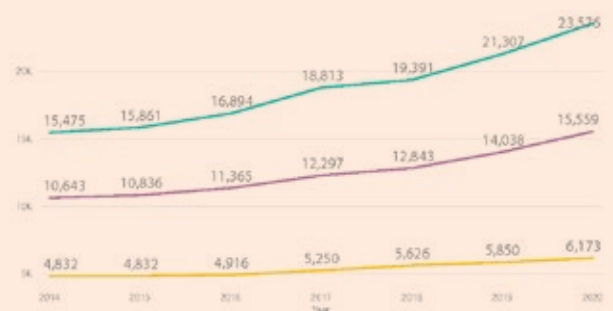
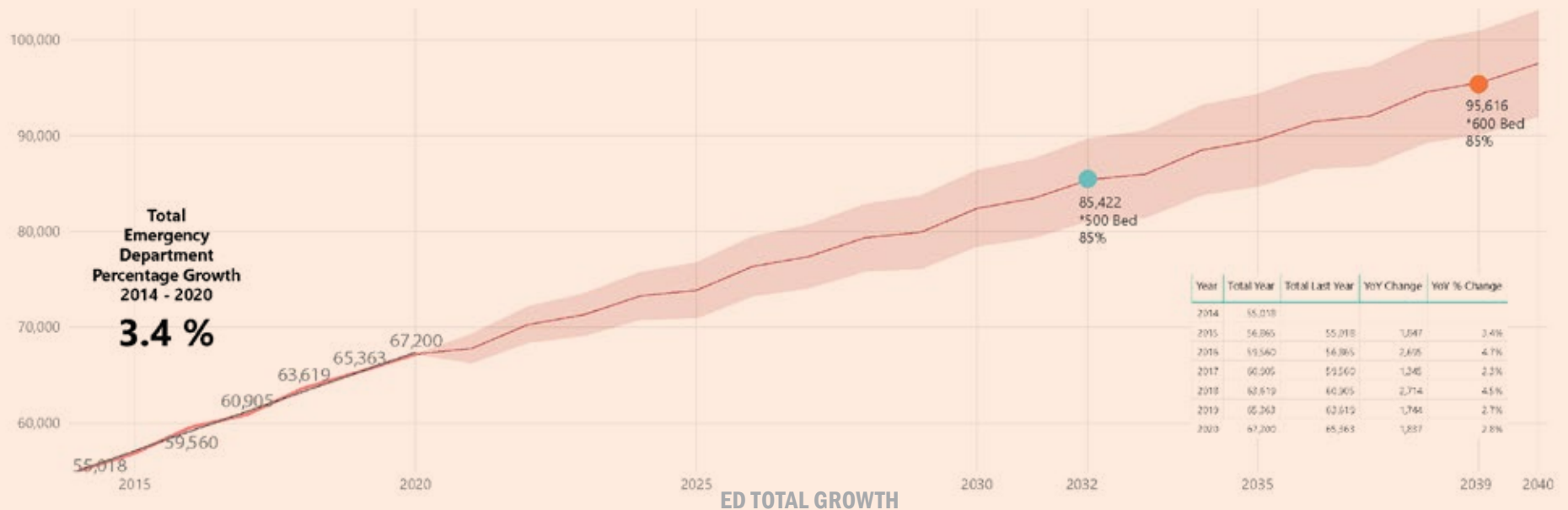
We have worked with health systems throughout the U.S. to optimize the distribution of services, locate centers of excellence, and reprogram and reposition individual campuses.

Through the course of a 25-year relationship, we have served as a trusted advisor to Memorial Sloan-Kettering's senior leadership, helping one of the world's premier cancer centers evaluate opportunities and implement strategies for growth and change.

Memorial Sloan Kettering Cancer Center

SYSTEM-WIDE STRATEGIES FOR HEALTHCARE SYSTEMS

Our experience designing, allows us to anticipate the timeframe horizon for bringing new facilities online and optimize the distribution of clinical, academic, and research facilities.



STRATEGIC PLANNING

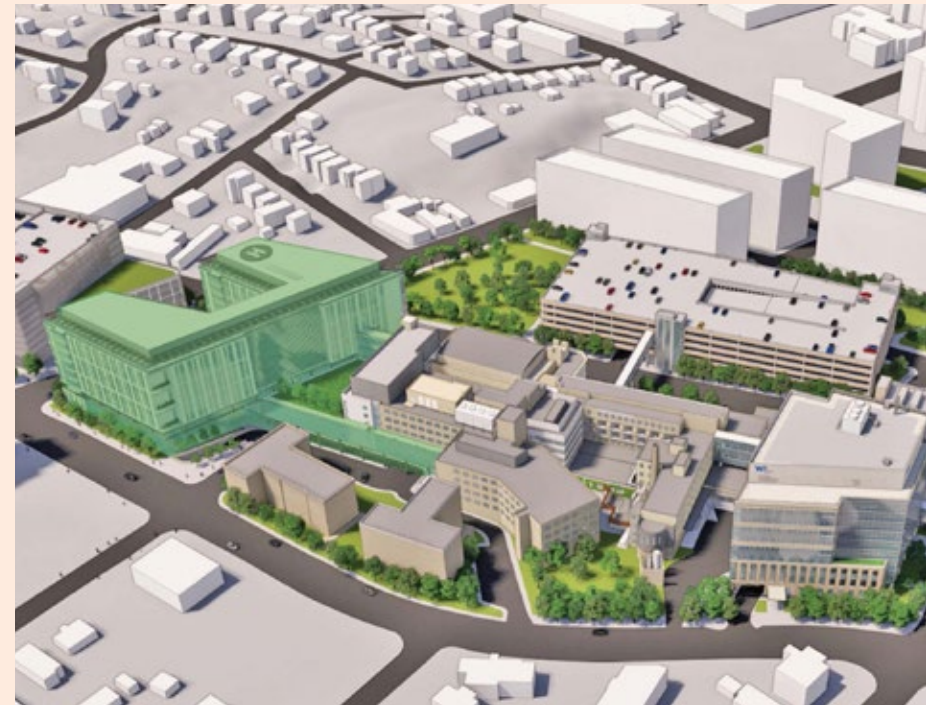
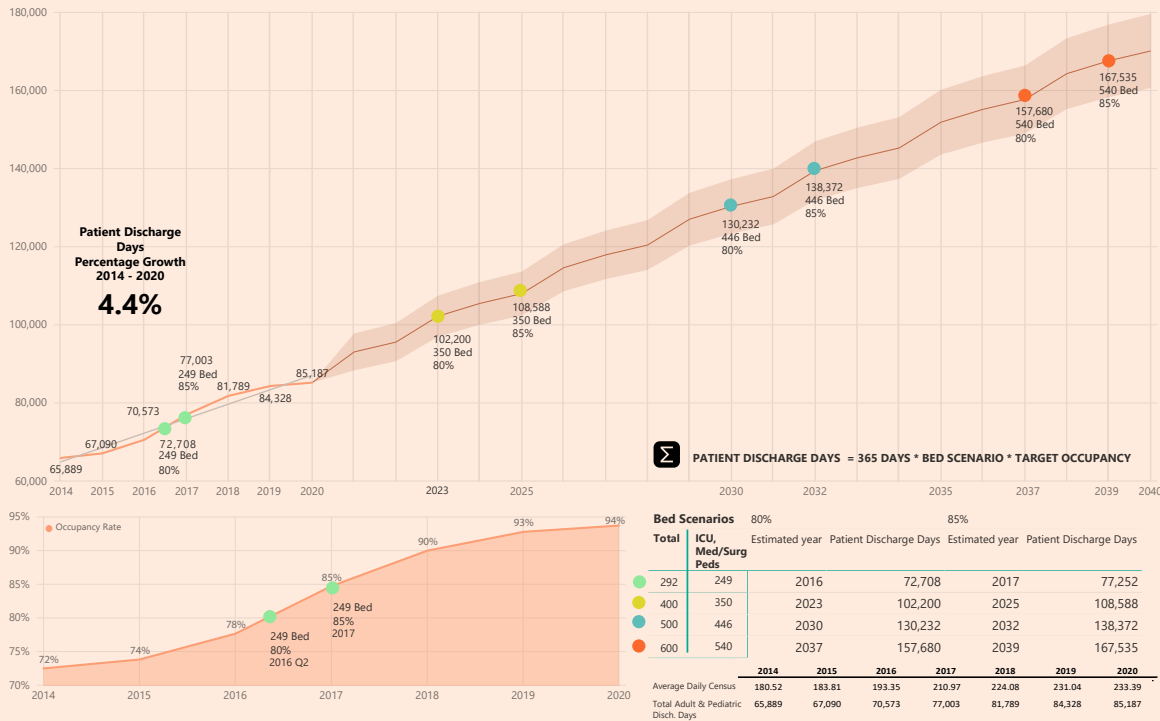
TRUSTED ADVISORS TO MEDICAL CENTERS PLANNING FOR GROWTH AND MODERNIZATION

We combine knowledge of state of the art healthcare design with real-world expertise in development and planning to help major urban medical centers navigate the complex world of urban real estate for growth and system modernization.



Montefiore Medical Center System

TRUSTED ADVISORS TO MEDICAL CENTERS PLANNING FOR GROWTH AND MODERNIZATION



EPR Garage
Project X (Distribution)
Utility Relocations
Davis Development

2020				2021				2022				2023				2024				2025			
Q1	Q2	Q3	Q4	Q1	Q2	Q3	Q4	Q1	Q2	Q3	Q4	Q1	Q2	Q3	Q4	Q1	Q2	Q3	Q4	Q1	Q2	Q3	Q4

STRATEGIC PLANNING

DEVELOPMENT ADVISORY SERVICES

Leveraging our expertise in the design and development of a wide range of building types, real estate economics, and urban planning, we have been able to provide health care systems throughout the world with an understanding of highest and best use, formulate implementable development and/or land disposition strategies, and provide support during negotiations with potential buyers, as well as entitlement strategy.

NYU Langone Health: Clinical Cancer
Institute
New York, New York

DEVELOPMENT ADVISORY SERVICES

IMAGING DEPARTMENT BENCHMARK TYPE A

PERKINS EASTMAN

PROJECT TITLE

Reset

Export to CSV

Scenario

Annual Growth Rate		Current Cases	2021	2022	2023	2024	2025	2026	2027	2028	2029	2030
4.5 %	CT	6000	6270	6553	6848	7157	7480	7817	8169	8537	8922	9324
0.5 %	X-Ray & Flouro	13000	13065	13131	13197	13263	13330	13397	13464	13532	13600	13668
2.5 %	MRI	1500	1538	1577	1617	1658	1700	1743	1787	1832	1878	1925
6 %	PET MRI & CT	800	848	899	953	1011	1072	1137	1206	1279	1356	1438
2 %	Nuclear Med	1300	1326	1353	1381	1409	1438	1467	1497	1527	1558	1590
2 %	Mammo	2000	2040	2081	2123	2166	2210	2255	2301	2348	2395	2443
1.5 %	Ultrasound	4000	4060	4121	4183	4246	4310	4375	4441	4508	4576	4645

	Case Time	Hrs Per Day	Day/Year	Utilization	2020 RM # NEED	2025 RM # NEED	2030 RM # NEED
CT	40	8	250	70	3	4	5
X-Ray & Flouro	20	8	250	70	4	4	4
MRI	60	8	250	70	2	2	2
PET MRI & CT	90	8	250	70	1	2	2
Nuclear Med	90	8	250	70	2	2	2
Mammo	40	8	250	70	1	2	2
Ultrasound	40	8	250	70	2	3	3



FOR MORE INFORMATION CONTACT



L BRADFORD PERKINS
FAIA, MRAIC, AICP

Chairman
lb.perkins@perkinseastman.com

JASON HARPER
AIA, LEED AP

Principal
j.harper@perkinseastman.com

SANJAY PARMAR
AIA, NCARB

Principal
s.parmar@perkinseastman.com

ERIC FANG
AIA, AICP, LEED AP

Principal
e.fang@perkinseastman.com