

LIVING



LIVING ON THE NEW MAIN STREET

Anthology of King of Prussia

PERKINS —
EASTMAN

Living on the New Main Street

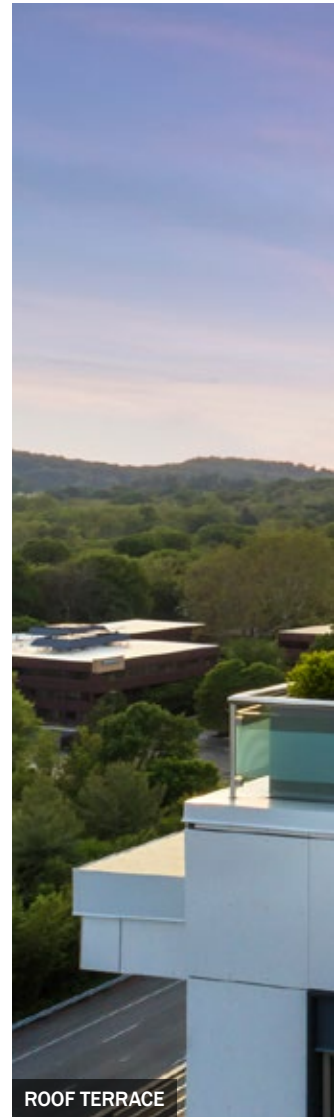
ANTHOLOGY OF KING OF PRUSSIA

Tucked among 122 acres at The Village At Valley Forge, a new mixed-use community, Anthology of King of Prussia offers senior living residents a rich and vibrant lifestyle within a greater walkable development.

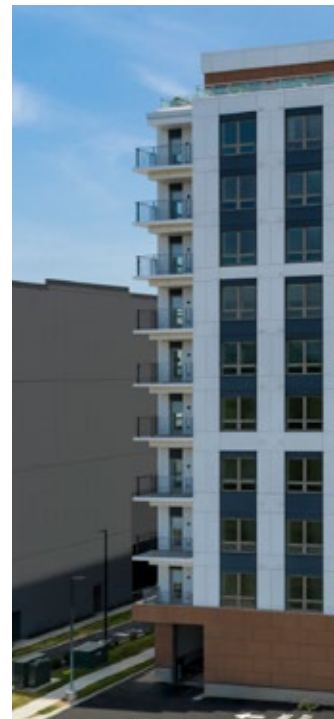
The Village At Valley Forge is a lifestyle, mixed-use entertainment destination with its own village center, specialty dining, shopping, hotels, varied housing types, entertainment options, as well as medical services, all within a walkable, micro-urban environment. The Anthology of King of Prussia is the newest addition to this vibrant development. Blending hospitality-inspired amenities with the services and care of a life plan community, the Anthology offers its residents a sense of community and connectivity, as well as abundant opportunities for multi-generational activities, events, and entertainment.

This type of location, a new planned development or an adaptive re-use within a large retail mixed-use property, is becoming an attractive opportunity for senior living developers across the country. The connection to a walkable community allows developers to tap into an established abundance of rich amenities, without having to incorporate all of these programs into their built environments. These developments also allow residents to be a part of, and integrated into, a greater community rather than segregated and separated by large distances, creating a new Main Street.

The Anthology is an exciting destination and living option for seniors, within the greater development. The 11-story high-rise includes 100 independent living apartments, 60 personal care apartments, 32 memory support residences, and a three-story parking garage totaling 191,200 sf. The architectural approach of the tower incorporates clean modern lines with warm neutral tones throughout, harmoniously blending with the modern style of the surrounding mixed-used community. A simple yet graceful bend of the building with rhythmic use of light and dark panels, along with a floor to ceiling glass band at the ground floor and penthouse, breaks down the scale of the building while responding to solar orientation within the site. Complementing the architectural language, the interior draws inspiration from the textures, colors, and materiality found in nearby Valley Forge National Park.



ROOF TERRACE





SIZE

191,200 sf (17,763 sm)

DESIGN SERVICES

Planning, Architecture,
Interior Design

CONSTRUCTION

New Construction

PROJECT FEATURES

Independent Living, Personal Care,
Memory Support, Parking, Bistro/
Café, Pub, Theater, Fitness Center,
Game Room, Rooftop Terraces

A simple yet graceful bend of the building uses the rhythm of light and dark panels, along with floor-to-ceiling glass at the ground floor and penthouse, to break down the scale of the building.



ENTRANCE

An open floor plan sets the tone for the entire development with gathering space for residents, guests, and staff, plus easy access to amenities.



BISTRO



Within the independent living and personal care apartments, elegant interiors balance the comforts of home with the perks of a luxury address. The range of flexible and private floor plans are well-appointed with stylish fixtures and finishes. The memory support neighborhood, comprised of 32 residences, is similarly designed with added measures including a private and secure centralized courtyard that provides connection to the outdoors and community.

Layering of Resident Experiences

The overall planning and design of resident amenities provide a layering of experiences throughout spaces to embrace Anthology's programming focus around six dimensions of wellness: emotional, intellectual, social, physical, spiritual, and environmental.

The experience begins with the intimate and beautifully landscaped courtyard creating an arrival sequence into the building where a warm glow spills from floor to ceiling glass through the layering of wood slat screens. An outdoor seating area on the ground-level, where residents and guests mingle on a daily basis, adds to the human-scale details.

A concierge-inspired reception area within an open floor plan sets the tone for the entire residence. This centralized open-plan gathering space for residents, guests, and staff enables easy access to adjacent amenities, which include a lively café/bistro, casual living room, private library, and indoor pool. The bistro connects visually to the arrival courtyard to provide a vibrant, energetic experience at the front entry. A variety of seating



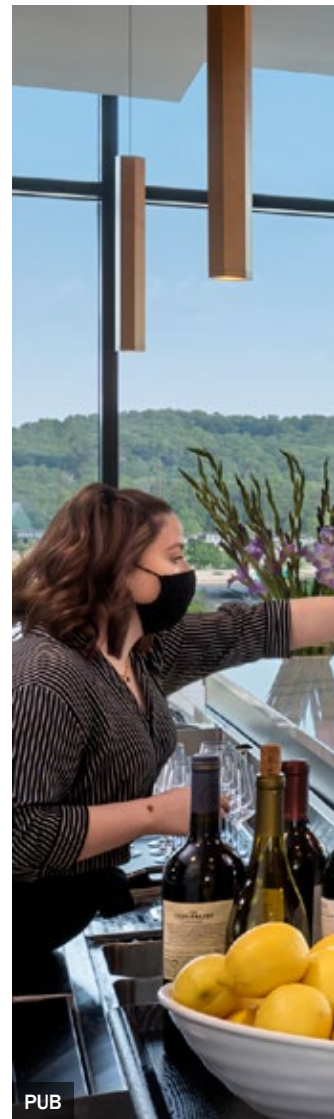
LIVING ROOM

options at the café/bistro enables residents to enjoy a range of culinary experiences and provides opportunities for casual gatherings throughout the day—from the breakfast bar to evening happy hours. Adjacent to the café/bistro, the living room lounge offers an intimate and relaxed residential environment, with views out to the pond, walking paths, and outdoor seating areas.

The penthouse level includes a pub, theater, salon, fitness center, game room, family room, and even more culinary and seating options. All meals are prepared by an on-site executive chef focused on seasonal menus using fresh, locally-sourced ingredients. These main amenities are strategically located at this level so residents may take advantage of expansive 360 degree views.

Two rooftop terraces at the penthouse level open to views of the Valley Forge National Park and feature an outdoor hearth and casual seating options for impromptu gatherings. An intimate outdoor terrace at the fifth floor provides a comfortable lounge with trellis and landscape planters.

Completed in February of 2021, the Anthology at King of Prussia creates a dynamic and compelling community for residents, their families, and the staff in an environment with a myriad of complementary amenities within a lively, walkable community.





The penthouse level features expansive views of nearby Valley Forge National Park.



CONTACT INFORMATION



JERRY WALLECK

Principal

+1 312 873 6260

j.walleck@perkinseastman.com



JINHWA (GINA) PARADOWICZ

Associate Principal

+1 312 873 6252

j.paradowicz@perkinseastman.com



JEN MCDERMOTT

Associate Principal

+1 312 873 6276

j.mcdermott@perkinseastman.com

**PERKINS —
EASTMAN**
Human by Design

www.perkinseastman.com